

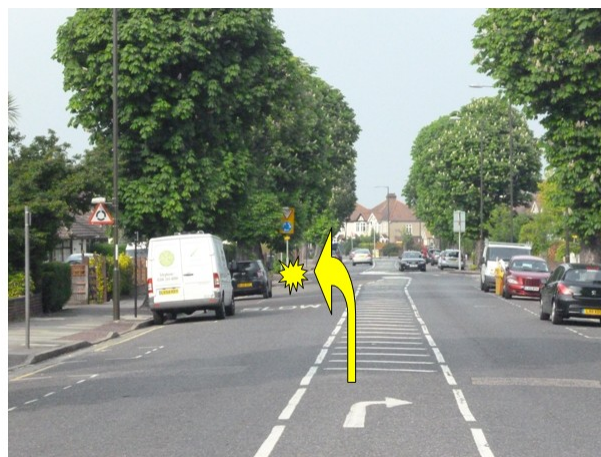
Scout Activity Centre at Avery Hill – How to get there - SE9 2HE.

For those not travelling to the Special Event Station by car (or motor cycle), the easiest mode of public transport is by bus with Nos. B13 and 162 being the closest. A list of the convenient routes is given below together with their major connection points.

The nearest Main-Line Railway, Docklands Light Railway and Underground stations are listed below with their connections. **It should be noted that New Eltham Station is only a 5 minute walk away**, as well as being on a bus route.

Advice on Car Parking is included.

Entrance to Site is opposite and a few yards to the left of Cradley Road (mini round-about) and between Nos. 101 and 105 Avery Hill Road – it is easy to miss, even on foot.



Approach from East

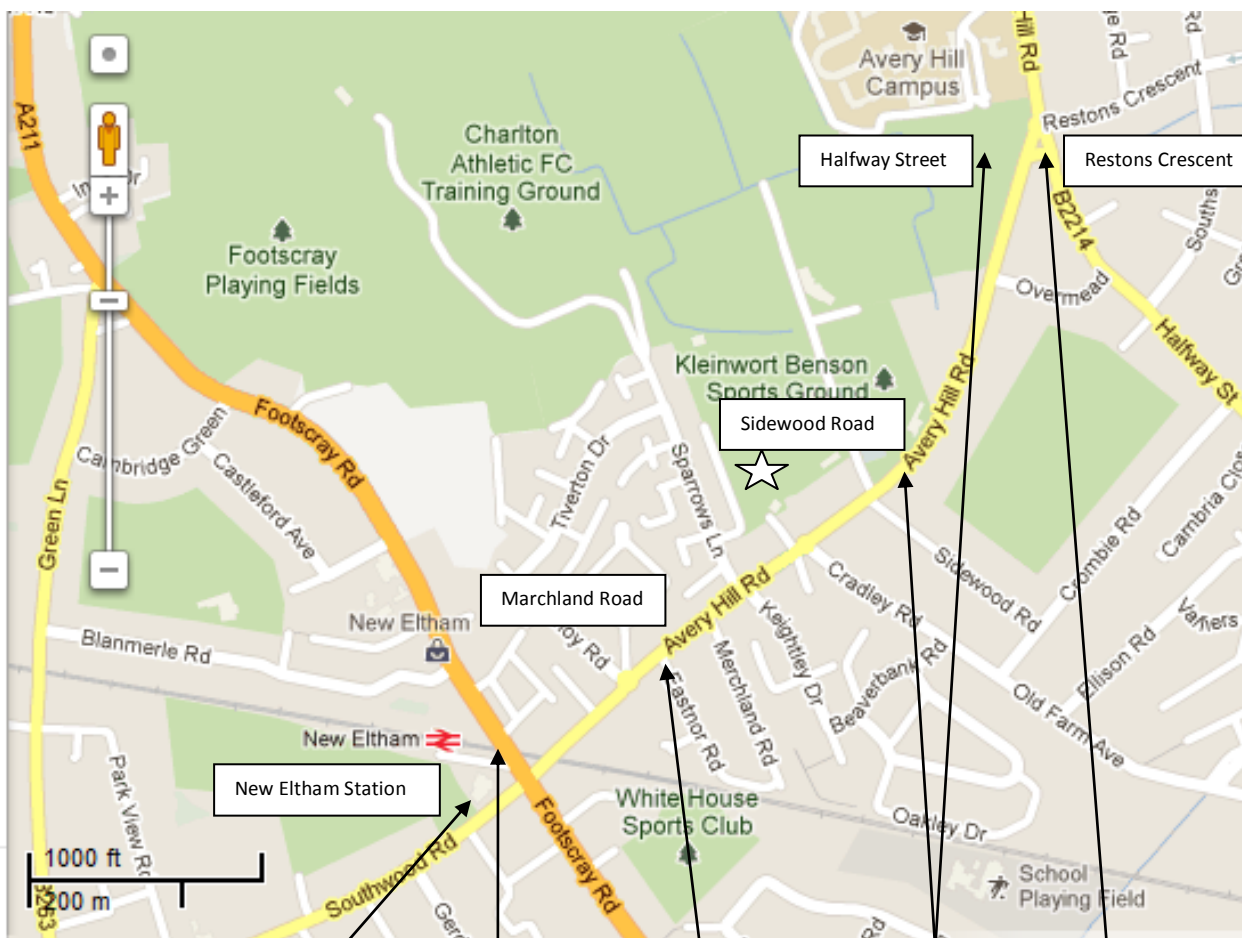
Approach from West



Entrance to Site

To plan journey to destination **SE9 2HE** go to

<http://www.tfl.gov.uk/gettingaround/1106.aspx>



Bus 162 Bus B13 Bus B13 & 162 Bus B13 & 162 Bus B13 & 286

also

160, 233, 314 & 321

Bus Routes serving Activity Centre or New Eltham Railway Station:-

see <http://www.tfl.gov.uk/tfl/gettingaround/maps/buses/pdf/neweltham-10533.pdf>

B13	Bexleyheath to New Eltham Railway Station
160	Sidcup Station, Eltham High Street to Catford
162	Beckenham Junction Station to Eltham Bus Station
233	Swanley, Sidcup to Eltham Bus Station
286	Queen Mary's Hospital Sidcup, to Eltham Station, Greenwich (Cutty Sark)
314	New Addington, Bromley to Eltham Bus Station
321	Footscray (Tesco), Sidcup, Eltham High Street, Lewisham to New Cross (Sainsbury's)

Bus Routes serving Eltham Railway Station and/or Eltham High Street:-

see <http://www.tfl.gov.uk/tfl/gettingaround/maps/buses/pdf/eltham-2083.pdf>

124	Catford to Eltham (Southend Crescent)
126	Bromley South to Eltham High Street
132	Bexleyheath, Eltham High Street to North Greenwich
161	Chislehurst War Memorial, Eltham Church/ High Street, Woolwich to North Greenwich
B16	Bexleyheath, Eltham High Street to Kidbrooke Station

MAIN-LINE RAILWAY SERVICES

1. NEW ELTHAM STATION within 5 minute walking distance or Buses No. 162 or B13

for details

see <http://www.nationalrail.co.uk/stations/neh/details.html> and enter code NEH

with frequent trains from:

London Charing Cross, Waterloo, and London Bridge, plus

London Cannon Street (but **NOT Sundays**).

Trains from above London stations plus Victoria (but **NOT Sundays**) also serve:

2. ELTHAM STATION which is next to **ELTHAM BUS STATION**

then bus No. 162 (direct to site) or No. 314 (to New Eltham Station)

or No. 132, 161, or 286 to Eltham High Street then No. 233 to New Eltham Station

see <http://www.tfl.gov.uk/tfl/gettingaround/maps/buses/pdf/eltham-2083.pdf>

DOCKLANDS LIGHT RAILWAY

see <http://www.tfl.gov.uk/assets/downloads/dlr-route-map.pdf>

terminates at **WOOLWICH** then No. 161 bus to Eltham Station/High Street and change

This branch also **connects with CITY AIRPORT**

See <http://www.londoncityairport.com/>

Note – Public Transport from City Airport costs £8.90 Taxi costs about £40.

DLR also terminates at **LEWISHAM** and then take bus No. 321 to New Eltham Station

LONDON UNDERGROUND terminal is at **NORTH GREENWICH**

which is also the terminus of **No. 132 bus to Eltham Bus Station**

or **No. 161 to Eltham Bus Station then Eltham High Street**

see <http://www.tfl.gov.uk/assets/downloads/standard-tube-map.pdf>

CAR PARKING **Limited parking on site**

Entrance to Site is opposite and to the left of Cradley Road (mini round-about)

The site entrance is between Nos. 101 and 105 Avery Hill Road and almost on the mini-roundabout - so not the easiest place to see!

On site parking is limited to around 20 cars and it can get difficult to manoeuvre with that many cars on site plus it is single file in and out.

On street parking on Monday-Friday is difficult because of congestion and is restricted to 1 Hour between 9.30 – 11.0 am, i.e. it is best not to park before 10.0 am.